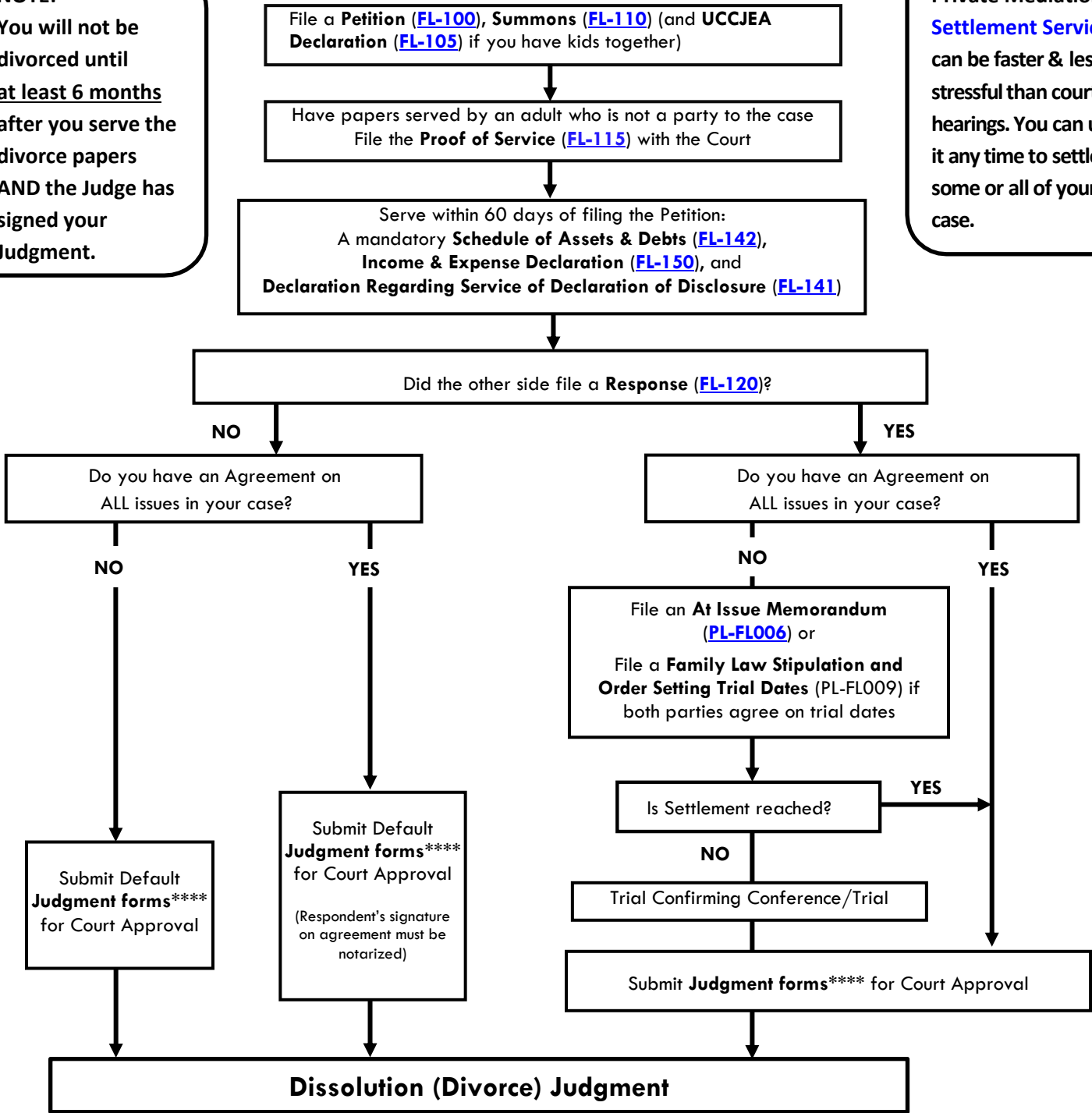


DIVORCE* CASE FLOW CHART**

(Dissolution, Legal Separation and Nullity***)

NOTE:
 You will not be divorced until at least 6 months after you serve the divorce papers AND the Judge has signed your Judgment.

Private Mediation or **Settlement Services** can be faster & less stressful than court hearings. You can use it any time to settle some or all of your case.



* Divorce here also refers to dissolution of domestic partnership
 ** This flow chart does not include the process and procedure when parties are requesting interim or temporary orders pending a final resolution of your case.
 *** Nullities require a Court hearing and Judge's approval before a Judgment is granted.
 **** Judgment forms are a set of forms to finish your case that are customized for your family. For a list of needed forms, see the Judgment Checklist (FL-182).
 Placer County Superior Court provides free Form Packets for the divorce process. Please see additional information at www.placer.courts.ca.gov.
 This chart shows the basic outline of a divorce case. Please consult with an attorney for legal advice concerning your individual case. If you do not have an attorney, the Self-Help Center offers free procedural assistance, however, the Self-Help Center cannot provide legal advice. The Self-Help Center also offers no-cost, voluntary **Settlement Services** to assist with finalizing your divorce if one or more party is self-represented.