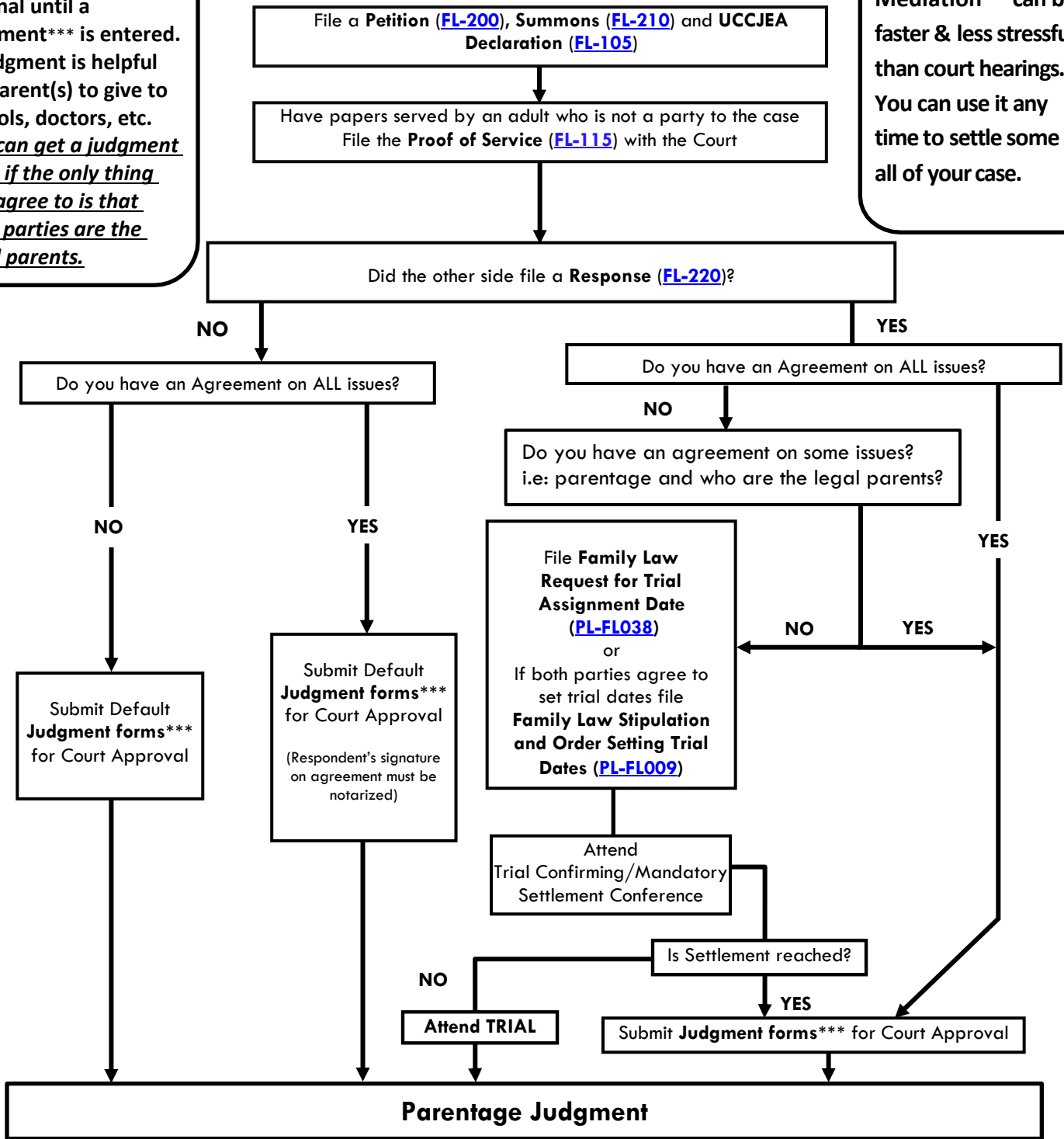


Parentage (UPA) Flow Chart*

Unmarried parents may open this case type to decide who their child’s legal parents are (“parentage” or “paternity”) and make child custody, parenting time, and child support orders.

Note: Your case will not be final until a Judgment* is entered. A Judgment is helpful for parent(s) to give to schools, doctors, etc. You can get a judgment even if the only thing you agree to is that both parties are the legal parents.**

Mediation can be faster & less stressful than court hearings. You can use it any time to settle some or all of your case.**



* This chart shows the basic outline of a parentage case. It does not include the process and procedure for requesting interim or temporary orders pending a final resolution of your case. Please consult with an attorney for legal advice concerning your individual case. If you do not have an attorney, procedural assistance including help with Judgment forms is available at the Self-Help Center, however, the Self-Help Center cannot provide legal advice. To schedule an appointment with the Self-Help Center, visit www.placer.courts.ca.gov.
 **Placer Superior Court offers a two-tiered mediation model whenever custody and visitation are in dispute. The goal of mediation is to help parties develop an agreement on a parenting plan in their child’s best interest. For more information, visit www.placer.courts.ca.gov. Parties can also agree and/or request to attend private mediation or “private child custody recommending counseling.”
 ***Judgment forms are a set of forms to finish your case that are customized for your situation. Even if you reached an agreement on custody and visitation, your case is not final until a Judgment is entered.